

The McLoughlin

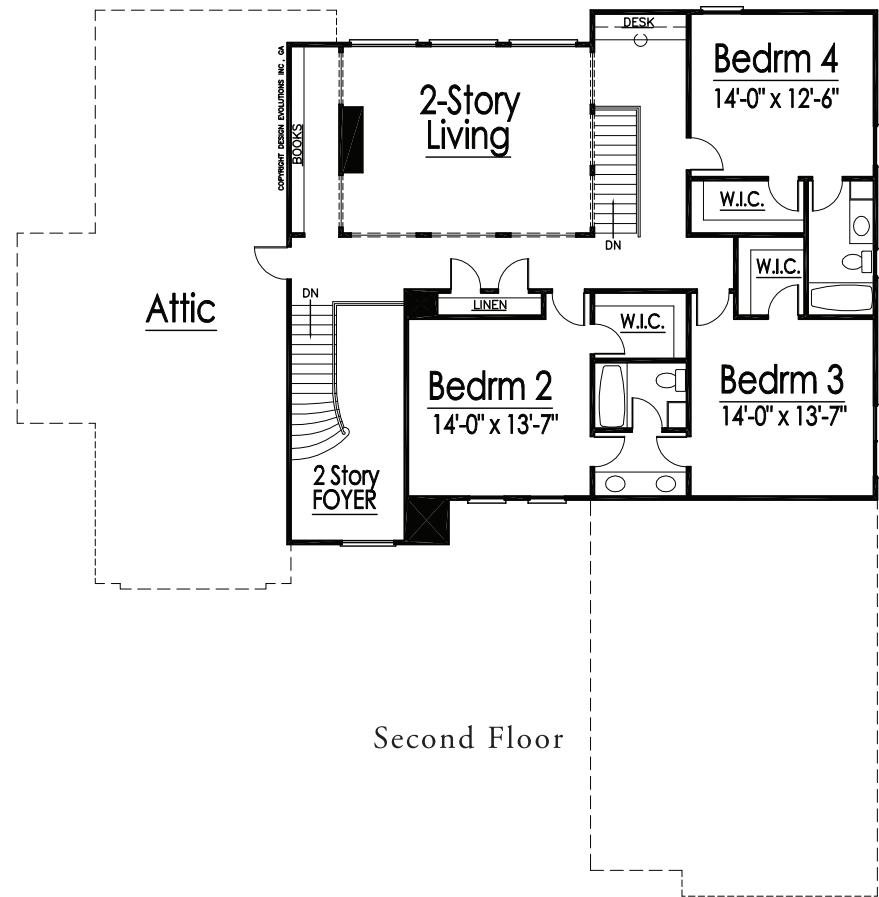
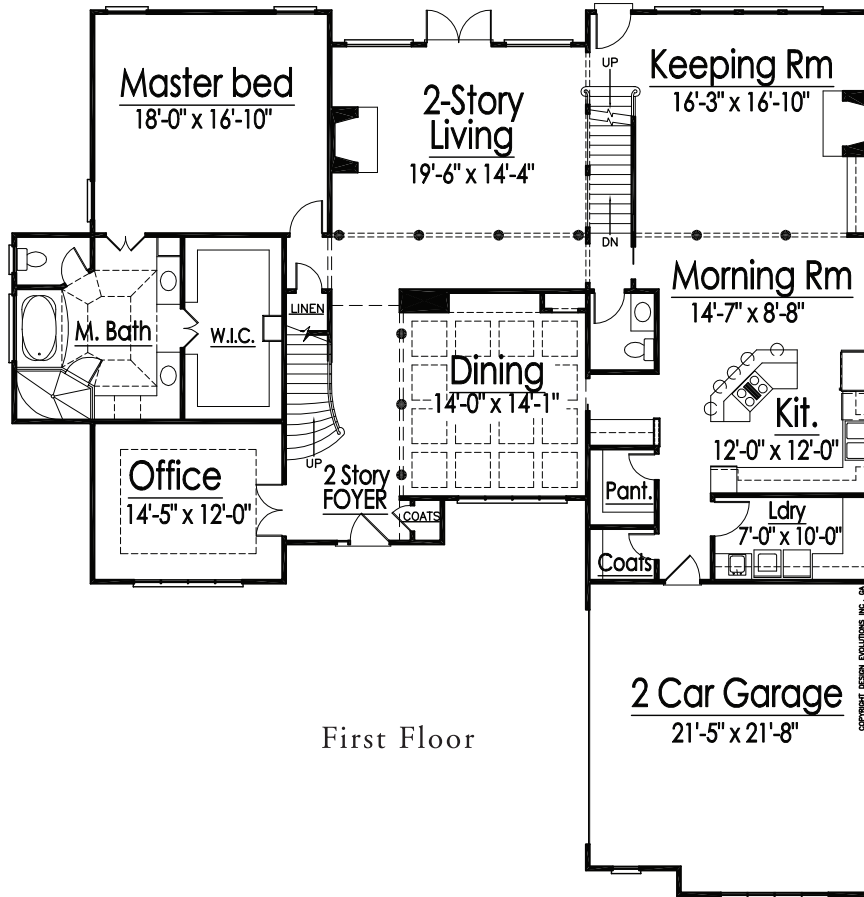
4 BEDROOMS
3.5 BATHROOMS



The McLoughlin model is a home designed for your family's immediate comfort. A relaxed floor plan includes a home office directly off the two story foyer, both front and rear staircases for convenient access to the home's second level, and expansive space combining the kitchen, morning and keeping rooms which are sure to become the hub of your family's activities. The master suite is downstairs for stylish seclusion, and upstairs, three additional bedrooms each boast walk-in closets and a shared bath for two, and a private bath for one. A niche provides a private desk for a family computer station, and access to a huge attic space can be utilized in a variety of ways. The McLoughlin model will afford family comfort for years to come.

Eagle's
NEST
AT WEST NECK

The McLoughlin



757.301.7500
liveateaglesnest.com



Marketed By
 THE *John Savino* GROUP
 Prudential
 Towne Realty

